



**2023/24**

# Member Benefits

**Australasian  
Railway  
Association**







# Contents

<b>A note from the CEO .....</b>	<b>02</b>
<b>Our Board .....</b>	<b>04</b>
<b>Our Strategic Plan .....</b>	<b>05</b>
<b>Why join the ARA .....</b>	<b>06</b>
<b>Policy, advocacy and research .....</b>	<b>09</b>
<b>Industry Development .....</b>	<b>13</b>
<b>Workforce Development .....</b>	<b>15</b>
<b>Courses .....</b>	<b>17</b>
<b>Networking and events .....</b>	<b>19</b>
<b>Conferences .....</b>	<b>20</b>
<b>ARA Members .....</b>	<b>22</b>



# A note from the CEO

**If you work in the rail industry, being a member of the Australasian Railway Association (ARA) can help unlock access to new networks and insights and allow you to play a role in shaping the future of our sector.**

The ARA offers a wide range of services to support our members' growth and success and to ensure a strong future for rail in Australia and New Zealand. As the voice for the rail industry, we are committed to championing the causes that matter to you and advancing the issues that are critical to our collective success.

In the following pages, you will see the wide range of services and benefits you can access as an ARA member, from events and networking programs to initiatives that allow you to influence our policy and advocacy agenda.

We are constantly evolving our member offering to ensure we are supporting a connected and sustainable rail industry. We hope you will join us to take advantage of the full range of member benefits available to you.



**Caroline Wilkie**

Chief Executive Officer,  
Australasian Railway Association (ARA)

## How to engage with the opportunities of being an ARA member

The ARA is the peak body for the rail sector in Australia and New Zealand.

We advocate for more than 220 member organisations to support vibrant, sustainable and connected communities and promote greater use of rail across our passenger and freight networks.

Our members include every aspect of the rail supply chain, from the passenger and freight operators that keep essential services moving to the track owners, managers, contractors and suppliers that ensure a safe and efficient rail network.

We believe the rail industry has a crucial role to play nationally in the region's sustainable development and growth and know that the industry offers meaningful and rewarding careers for tens of thousands of people.

Our significant program of work is focused on supporting a strong advocacy agenda and creating opportunities for the rail industry to network, collaborate and share information, to maximise the benefits rail has to offer the wider community.

**[www.ara.net.au](http://www.ara.net.au)**







# Our Board

The ARA Board sets the strategic direction of the ARA and includes senior industry leaders that represent all facets of our diverse membership base.

## General Directors



**Danny Broad**

Chair, Australasian Railway Association (ARA)



**Caroline Wilkie**

Chief Executive Officer, Australasian Railway Association (ARA)



**Caryn Anderson**

Executive General Manager, Port of Melbourne



**Steve Butcher**

Executive General Manager and Managing Director Rail and Transport Division, John Holland Group



**Howard Collins OBE**

Chief Operations Officer - Greater Sydney, Transport for NSW



**Murray Cook**

Chief Executive Officer, Arc Infrastructure



**Julien Dehornoy**

Chief Executive Officer, Keolis Downer



**Rebecca Want**

Transport Market Leader for Sydney, GHD



**Peter Reidy**

Chief Executive Officer, Kiwirail



**Anna Squire**

Australasia Rail Business Leader, Arup



**Kat Stapleton**

Chief Executive Officer, Queensland Rail



**Paul Scurrah**

Chief Executive Officer, Pacific National

## Sector Directors - Chairs of the ARA's Executive Committees



**Richard Cohen**

Managing Director Port, Rail & Core Services - Iron Ore, Rio Tinto



**Adam Williams**

Executive General Manager, Passenger South, Downer



**Peter Lensink**

Chief Officer and Managing Director, Transdev New Zealand



**John McArthur**

Chief Commercial Officer, One Rail Australia



**Julian Sharp**

Project Director, CPB Contractors

\* Board is current prior to the 2023 ARA AGM.



# Our Strategic Plan

The ARA's 2022-2025 strategic plan guides our work to support our members and to advance issues of importance to the rail industry. The ARA Board set and approved the strategic plan in July 2022.

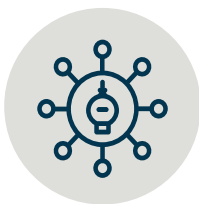
## Our Vision

A thriving rail industry enabling economic growth and driving sustainability.

## Our Mission

Collaborate with members, industry, and government to build industry capability, harmonisation, workforce development and sustainability.

## Strategic Objectives



Leading industry voice



Exceptional Member experience



Thriving, diverse and skilled workforce



Productive, safe and efficient industry



Sustainable and resilient industry that benefits communities

## Operational Priorities

Sustainable operations

Strong membership

Engaging communications

Thriving team

# Why Join the ARA

**The ARA brings the rail industry together, helping you connect with the leaders, decision makers and technical specialists working across Australia and New Zealand.**

**Your ARA membership can help you create new connections in the industry, put you at the centre of advocacy to support the future of rail and give you unmatched access to our range of events.**

## **Connect with leaders and experts in the industry**

Be part of a network that brings together the top leaders and technical specialists working in the rail industry. Connect with people that are shaping the industry to share information and best practice or create new work opportunities for your business.

Be among the first to receive the latest information about the rail industry.

Take advantage of the ARA's extensive network to be among the first to hear the latest news and industry developments and what they mean for you. Make the most of our regular member updates, detailed insights, and opportunities to network with your peers to make sure you are always up to date.

## **Contribute to the future of rail**

Join our committees and working groups to help shape the policy positions and advocacy agenda that will support a strong and sustainable rail industry for all of us. Be part of advancing the issues that matter to your business to make your mark in the industry.

## **Gain access to ARA events at discounted rates**

The ARA's networking and events program is not to be missed and, as a member, you can access even more events by taking advantage of discounted rates. Make the most of networking and business development at our events to ensure you are visible to key decision makers in the industry.

## **Get ahead of the pack with member-only content**

The ARA has introduced a select number of member-only webinars and events to provide members with exclusive access to key decision makers and influencers. Take advantage of your membership status by joining our member-only webinars, leaders' dinners and boardroom events to take your networking to the next level.

### **Become a member and save**

**We have highlighted exclusive member benefits throughout this document with this bookmark, so you can see how you can make the most of your ARA membership.**









National  
Transport  
Commission



www.ntc.gov.au

National  
Railway  
Association  
Agreement  
for  
Public

Victorian Minister for Transport and Infrastructure Hon Jacinta Allan, Federal Minister for Infrastructure, Transport, Regional Development and Communications Hon Catherine King MP and ARA Chair Danny Broad signed a Memorandum of Understanding to support improved interoperability in rail in March 2023.



# Policy, Advocacy and Research

**The ARA undertakes a wide range of research and industry engagement to drive its policy priorities and determine what we are advocating for on behalf of our members.**

## **Supporting harmonisation of the rail industry**

The ARA is working extensively with government and industry stakeholders to support a national approach in the rail industry. As part of this, the ARA engaged in all three working groups established as part of the National Rail Action Plan in 2020, and is continuing to advocate for a strong national approach that supports greater interoperability and drives efficiency and productivity in the industry.

## **Submissions and government engagement**

The ARA regularly prepares submissions to government to confirm the industry's position on key issues impacting its operations. Submissions are developed in consultation with our committees and working groups to ensure they appropriately address issues of importance to the future of rail.

Our submissions and policy positions are supported by an ongoing government engagement program to ensure Ministers, Department heads and other decision makers have a clear understanding of the industry's key challenges and opportunities, and the policy settings that will support its long term growth and success.

## **Member briefings**

The ARA hosts member briefings with key government stakeholders to provide opportunities for direct industry engagement of key policy issues impacting the rail industry. Briefings are held on an as-needed basis, either in person or via online meetings.

## **Committees and working groups**

Our committees and working groups provide an opportunity for you to have your say on the future of the rail industry and to inform the ARA's advocacy agenda. The ARA has five executive committees, which bring together chief executives and senior leaders from our five key member categories to help set our strategic priorities and direction. The chair of each executive committee is appointed to the ARA Board as a Sector Director. The ARA also has a series of committees and working groups focused on specific issues of relevance to the rail industry.

### **Passenger**

#### **Passenger Operators Executive Committee (POEC)**

The Passenger Operators Executive Committee represents public transport operators across Australia and New Zealand. It supports collaboration and information sharing and identifies opportunities to increase rail patronage, promote the sustainability benefits of rail, drive innovation and best practice in passenger rail and support the long term operational efficiency of public transport networks.

#### **Accessibility Committee**

Shares information and provides advice on current and future accessibility issues in the passenger rail sector, with a focus on greater coordination and collaboration across Australia and New Zealand.

#### **Return to Rail Committee**

Brings together corporate affairs, communications and customer service representatives of passenger operator organisations to identify and implement initiatives to encourage greater use of rail. Leads the development of communications strategies to support greater use of public transport across and identifies opportunities to showcase the sustainability, social and economic benefits of greater use of rail.

### **Telecommunications (Spectrum) Committee**

Facilitates cooperation in relation to telecommunications activities to achieve interoperability, improved functionality and increased delivery efficiency of railway communications systems. Includes a focus on Spectrum issues.

### **Antisocial Behaviour Network**

Provides a consultative forum for passenger rail operators to discuss antisocial behaviour matters, including best practice for collective improvement to reduce assaults on staff, trespass and graffiti on the rail network.

### **Cybersecurity Network**

Provides a consultative forum for passenger rail operators to discuss cybersecurity matters, including best practice to address potential cybersecurity instances within the rail network.

### **Revenue Protection Network**

Provides a consultative forum for passenger rail operators to discuss revenue protection matters, including best practice on issues such as infrastructure design, ticketing, signage and fare structures.

## **Heavy Haul**

### **Rail Industry Executive Committee**

The Rail Industry Executive Committee represents rail manufacturers and suppliers operating in the rail industry. It develops, investigates and provides policy advice to the ARA on issues relevant to manufacturers and suppliers. The Committee also leads a work plan to achieve a favourable environment for the rail manufacturing and supplier sectors to prosper.

### **Project i-TRACE Steering Committee**

Supports the rollout of Project iTRACE in the rail industry.

### **RIEC Research and Development Working Group**

Focuses on increasing the visibility of Australia's research capabilities, identifying areas requiring research, and demonstrating the link between R&D and type approvals, local content, support and investment in local manufacturing and technology.

## **Freight**

### **Rail Freight Executive Committee**

The Rail Freight Executive Committee represents rail freight operators, rail infrastructure managers, ports and terminals with a focus on proactive advocacy to drive change and address persistent barriers to the productivity, efficiency and competitiveness of rail freight.

### **Interoperability Working Group**

Leads consultation with freight sector representatives to identify priority interoperability challenges for action, and opportunities to resolve them.

### **Rail Freight Corporate Affairs Working Group**

Includes corporate affairs representatives from across rail freight sector to build a national advocacy campaign, engaging with industry and governments, to improve rail freight productivity.

### **Interoperability Working Group**

Leads consultation with freight sector representatives to identify priority interoperability challenges for action, and opportunities to resolve them.

### **Rail Freight Corporate Affairs Working Group**

Includes corporate affairs representatives from across rail freight sector to build a national advocacy campaign, engaging with industry and governments, to improve rail freight productivity.

## **Sustainability**

### **Sustainability Committee**

Leads the ARA's sustainability strategy to drive action and shape positive change in the rail industry. Provides an avenue for senior rail managers and executives to share information and discuss projects, activities and initiatives related to sustainability.

### **Women in Rail Committee**

Focuses on enhancing gender diversity in the rail industry by sharing information on diversity and inclusion programs and overseeing the implementation of the Women in Rail strategy, which outlines a range of actions to improve female representation in the rail workforce.



### **Rollingstock Decarbonisation Working Group**

Supports information sharing, advocacy and discussion to enable the decarbonisation of rollingstock across Australia and New Zealand, identify potential barriers to change and support a national approach to the transition.

## **Contractors**

### **Rail Infrastructure Contractors Executive Committee**

The Rail Infrastructure Contractors Executive Committee represents the rail infrastructure construction sector delivering rail projects. It advocates to build a pipeline of opportunities that endure in the long term; enhance the environment and regulatory framework in which contractors operate and; establish best practice in project procurement, risk allocation, skills development, safety and construction innovation.

## **Workforce Development**

### **Workforce Development Committee**

Provides an active voice for harmonised industry training, course development and delivery across VET and higher education, and related HR matters such as remuneration, career pathways, and sharing of best practice learning and HR solutions.

### **Inland Rail Strategic Advisory Group**

Provides advice to align contractors and the wider VET industry concerning the attraction, training and career opportunities for communities impacted by the Inland Rail project and ongoing requirements across the asset lifecycle.

### **National SARC Governance Committee**

Oversees, resources and supports the development and delivery of a national Safely Access the Rail Corridor course. Its membership includes representatives from the ARA, RISSB, MTA and NTC.

### **Rail Industry Worker Advisory Committee**

The lead governance body for the Rail Industry Worker Program, setting and managing its strategic priorities.

### **Rail Industry Worker Matrices Committee**

Provides advice and guidance to support the operational performance of the Rail Industry Worker Program. Investigates and resolves a range of competency related issues that are escalated by the RIW Service Desk.

### **Rail Industry Worker Operations Committee**

Provides advice and guidance to support the operational performance of the Rail Industry Worker Program.

### **Rail Industry Worker Engineering Working Group**

Determines the required competencies, medical status and any licenses required for individuals to hold in order to have a National Engineering role in the RIW system.

### **Rail Industry Worker Power and Electrical Working Group**

Determines the required competencies, medical status and any licenses required for workers to hold in order to have a National Power and/or Electrical role in the RIW system.

### **Rail Industry Worker Project Management Working Group**

Determines the required competencies, medical status and any licenses required for individuals to hold in order to have a National Project Management role in the RIW system.

### **Rail Industry Worker Signalling Working Group**

Determines the required competencies, medical status and any licenses required for workers to hold in order to have a National Signalling role in the RIW system.

### **Rail Industry Worker Train Driver Training Working Group**

Determines the required competencies, medical status and any licenses required for workers to hold in order to have a National Train Driver role in the RIW system.

### **REMSMART Working Group**

Provides advice and feedback to inform industry data collection for the REMSMART program, including the identification of remuneration, incentive payments and other strategies that rail operators are using to attract and retain talent.

## Safety

### Safety Policy Committee

Provides an opportunity for senior rail safety managers and executives to discuss key safety policy and regulatory issues and assist in developing industry positions. The committee also shares information on projects, activities and initiatives related to safety, with a particular focus on collectively improving the industry's safety culture.

### Inland Rail Strategic Advisory Group

Provides a forum for sharing of best practice, particularly as it relates to skills challenges in regional Australia. The Advisory Group also ensures that connections across the wider rail skills resources are also supported.

## New Zealand

### Aotearoa Rail Committee

Provides a forum for New Zealand based members to lead and implement the ARA's Aotearoa Strategy, including all associated projects and initiatives. The Committee will also provide a forum for collaboration and is limited to organisation involved in passenger and freight rail operations.

### Aotearoa Rail Reference Group

Provides a forum for New Zealand based rail organisations (members and non-members) to collaborate on common industry challenges and share information from across the New Zealand rail industry.

## Young Leaders Advisory Board (Y-LAB)

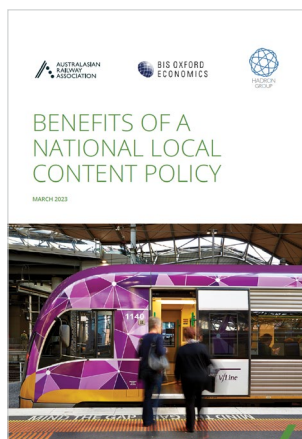
Bringing together young leaders to harness the ideas of young talent across the Australasian Rail Industry and provide advice and input to the ARA, its Committees and Board. Y-LAB formally engages the younger generation of the Australasian rail industry on key industry issues and provide a voice for and be a champion of the industry's younger demographic.

## Research

The ARA prepares research to inform its policy positions to influence advocacy agenda and government decisions on issues of relevance to the industry. Our research is developed in consultation with the ARA's committees and working groups and seeks to provide a strong evidence base for policy changes required to support a strong and sustainable industry over the long term.

Our research is shared with members via our committees and working groups, in our Weekly Update newsletter and on the ARA website.

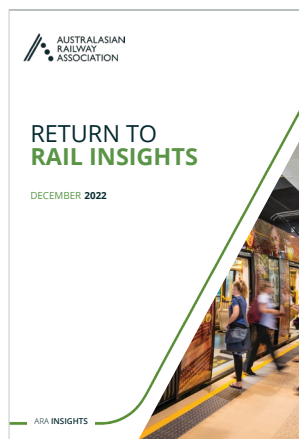
New research completed recently includes:



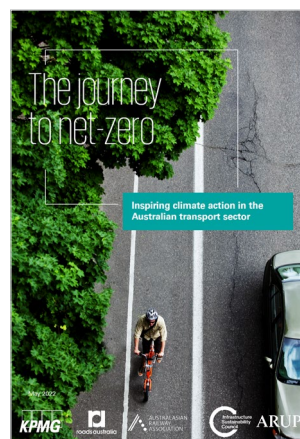
**Benefits of a National Local Content Policy**



**Australian Rail Market Outlook**



**Return to Rail Research Insights**



**Journey to Net-Zero**

# Industry Development

**Our industry development programs provide regular opportunities to hear about the latest insights, innovation and trends impacting the rail industry.**

**Make the most of your membership by encouraging your team members to participate in our programs and online events over the course of the year.**

## **Webinars**

Our webinars provide case studies, project updates, thought leadership and personal development discussions tailored to meet the needs of rail industry professionals. Webinars are free of charge for ARA members and are advertised regularly through our Weekly Update newsletter and on the ARA website. Look out for updates on new webinars as they are released throughout the year.

## **Meet the Buyer webinars**

Our exclusive, member-only Meet the Buyer webinars provide members with the chance to hear from government agencies, track owners and tier one contractors about their priorities for the year ahead. If you want to work with these organisations on their upcoming projects, these webinars provide an invaluable opportunity to find out about the key priorities, issues and concerns that are driving their decision making. While the webinars are free of charge, you must be an ARA member to register.

## **Meet the Innovator webinars**

In February 2022 we staged our inaugural member-only Meet the Innovator series. Meet the Innovator webinars connect buyers with rail suppliers offering new and emerging capabilities, innovations, and technologies driving the Australian rail projects into the future.

These webinars provide a valuable business development opportunity for buyers to hear a brief outline on key topics of interest through high level 10-minute pitches.

The Meet the Innovator webinars represent a range of suppliers in areas of safety and risk management, energy and sustainability, accessibility and wayfinding, asset management and AI, AR, VR simulations.

## **Mentoring programs**

The ARA's Women in Rail Mentoring Program supports the development of long and rewarding careers in the rail industry and is available exclusively to ARA members. The nine-month cross-industry program is designed to support, guide and retain women working in the rail industry.

Female mentees are paired with mentors for the professional and leadership development program, providing insights and advice on forging a successful career in rail. While the program is delivered online, a face-to-face event is planned for participants towards the end of the program.

For more information, visit our mentoring section of the ARA website.

## **Future Leaders Program**

The Future Leaders Program is a six-month program that brings together emerging leaders from throughout the Australasian rail industry. Participants gain an overview of the rail industry and its future direction and complete personality analysis testing to better understand their individual leadership style and develop their leadership skills.



They also participate in communication and conflict resolution sessions to support their leadership development, and complete group projects to be pitched to an industry judging panel at the conclusion of the program.

### **LinkedIn groups**

Our dedicated LinkedIn groups provide an opportunity to network and share information in an informal environment.

Our Women in Rail Network group provides information and updates on issues relating to gender diversity, career advancement and skills development in the rail industry.

Our Young Rail Professionals Network group provides information on personal and professional development for people aged under 35 years working in the rail industry.

The ARA also hosts a range of events to provide an opportunity to network and meet in person. Staff at ARA member organisations can apply to join both groups via LinkedIn.

### **Young Leaders Advisory Board**

The Young Leaders Advisory Board (Y-LAB) brings together young leaders from across the industry to harness the insights of emerging talent and consider the issues, projects and priorities on the ARA Board agenda. Young rail professionals working in member organisations have the opportunity to nominate to be part of Y-LAB.

### **Women in Rail Strategy**

Our Women in Rail strategy guides the industry's focus on this critical issue and seeks to create new opportunities for women to network, share information and access professional development designed for people forging their careers in rail. Improving gender diversity in the Australasian rail workforce is a key focus for the ARA and its members to support the industry's long term success.

We are also committed to furthering research and collecting diversity data to support the development of initiatives and programs to address gender diversity and support workforce inclusion.



Our Women in Rail Mentoring Program is available exclusively to ARA members.

# Workforce Development

**Our programs provide valuable resources for member organisations to support their efficiency, productivity and competitiveness.**

## **Rail Industry Worker (RIW) program**

The RIW program provides a single online competency management system for Australian rail workers. It ensures people working in the rail industry can have a single online record of their work and qualifications, making it easier and safer for them to work across projects and jurisdictions.

The program is the only one of its kind in Australia, and supports the safe and efficient operation of projects and operations across the country.

RIW is owned and endorsed by the ARA on behalf of our members and delivered by Metro Trains Australia (MTA). The program meets regulatory requirements and complies with national rail safety law.

The ARA also supports the development of national matrices for key roles through the RIW program. These matrices make it easier for qualifications to be recognised nationally, reducing the need for re-training when people move between projects and jurisdictions.

For more information, go to **[www.riw.net.au](http://www.riw.net.au)**.

## **REMSMART remuneration portal**

We have partnered with BDO and REMSMART to develop an online portal that allows members to access remuneration data specific to the rail industry. The rail industry remuneration portal is available exclusively to ARA members (Class E and above) to help them attract and retain the best team for their business.

The REMSMART Remuneration Portal is a free benefit for eligible ARA members and allows them to:

- Benchmark their remuneration for key roles against the wider rail industry
- Ensure their remuneration for top talent is competitive within the industry

- Track remuneration trends for key roles to support the retention of top talent
- Assess the application of benefits such as short term incentives and additional payments for remote workers in the rail industry
- Understand the drivers of remuneration for key roles in different jurisdictions across Australia
- Better plan their remuneration strategies in line with industry trends

Eligible ARA members will be invited to take part in the rail industry remuneration survey twice a year, unlocking their access to the portal in three easy steps:

1. Take part in the survey and share your organisation's remuneration data, confidentially and securely. Data will be validated by BDO and de-identified before being uploaded to the portal
2. Log in to REMSMART and access de-identified remuneration data, analytics and reports specific to the rail industry
3. Make the most of twice yearly data updates and regular trend reports to stay informed of the latest developments

## **Promoting the industry**

The ARA's extensive communications program provides many opportunities to profile member organisations' achievements and case studies. We are actively looking for member content to share across our channels, including the:

- ARA's social media channels
- Work in Rail project, profiling the people shaping the rail industry
- Project profiles and industry case studies, to be featured on our website



## Work in Rail

The ARA has launched a new website and campaign to promote rail careers and provide practical information on pathways for school leavers, university students, and people working in skilled roles in other industries. The website supports industry efforts to attract and retain people to the rail industry to help meet current and future demands.

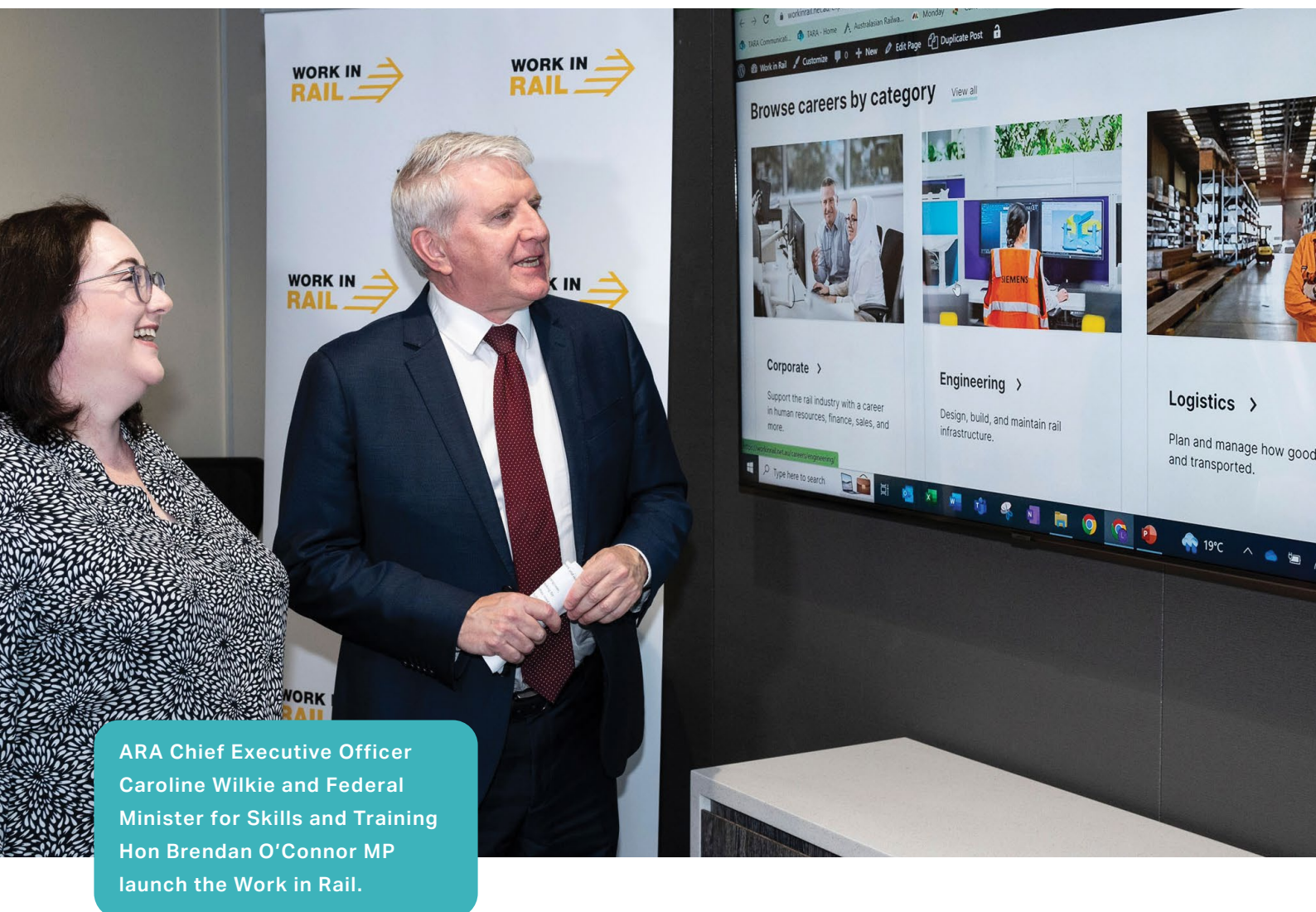
The primary objectives of the website and supporting campaign is to:

- Position the rail industry as an attractive option for people from diverse backgrounds, including a focus on gender diversity and promoting careers for women in rail
- Attract young people to the rail industry at the start of their careers

- Provide information on roles, pathways and training and education opportunities for people considering a career in rail
- Attract people from other industries to the rail industry to address current skills gaps
- Showcase examples of great careers and pathways into rail through case studies and profiles

ARA members can include a company profile on the website and participate in the supporting campaign. For more information on how your organisation can get involved, email us at **[workinrail@ara.net.au](mailto:workinrail@ara.net.au)**

To view the Work in Rail website, go to **[www.workinrail.net.au](http://www.workinrail.net.au)**



ARA Chief Executive Officer  
Caroline Wilkie and Federal  
Minister for Skills and Training  
Hon Brendan O'Connor MP  
launch the Work in Rail.

# Courses

**The ARA hosts a range of short courses to provide participants with a better understanding of the rail industry and deliver focused training on specialist technical areas such as signalling.**

The ARA works closely with members to understand the capability and competency challenges of our members and the new skills that are emerging as our industry embraces new technologies. We also work with a wide range of universities and vocational education providers to share member feedback and support the development of solutions such as electives in undergraduate degrees, micro-credentials in partnership with Engineers Australia and other learning solutions. Our courses complement these efforts and provide valuable professional development opportunities for people working in rail. ARA members can access discounted registration to our courses.

## Understanding Rail

Our highly popular Understanding Rail course is now online, bringing this comprehensive introduction to the rail industry straight to your home or office. Whether you are new to the rail industry, have recently started a new role, or simply want to brush up on your industry knowledge, this is the ideal opportunity to take the next step in your career. Participants hear direct from industry leaders and experts as they work through this highly interactive program to lay the foundations for their career in rail. Understanding Rail is delivered over five-weeks and includes:

- Five, 1.5 hour live and interactive webinars
- About two hours of interactive educational activities each week via our online platform
- Face-to-face site tours in some capital city locations

The course is held on a regular basis, in line with demand, so look out for updates in the Weekly Update newsletter or on the ARA website.

## Introduction of Rail Signalling

The ARA's Introduction to Rail Signalling Course is designed to provide an overview of signalling operations in the rail industry. It is ideal for people with varying degrees of knowledge about rail operations.

Whether you work in rail operations, are a graduate new to the industry wanting to build your skills, an engineering practitioner involved in signalling projects or considering a career change, this course will help provide you with a basic understanding of what you need to know.

Over five weeks, the course delivers five, 60 – 90 minute live and interactive webinars as well as 90 minutes of interactive self-guided educational activities each week via our online learning platform. Key issues covered include:

- How to adopt key signalling terminology and use it in your work environment
- Rail signalling principles and the core elements of the signalling system
- The critical role the signalling systems play in the context of safe working system
- The importance of systems integration in the context of lineside and digital signalling systems within a single network
- The evolution of signalling including future trends and modern signalling systems
- The complexities of assuring the safe operation of both lineside and digital signalling assets
- The principles of digital signalling design
- Learn about Future Railway Mobile Communication Systems (FRMCS) and its role in rail safety related communications and enabling new signalling systems



- How to read a signalling plan
- Understanding maintenance aspects of the signalling system
- Pathways to signalling

The course is held on a regular basis, in line with demand, so look out for updates in the Weekly Update newsletter or on the ARA website.

## Scholarships

The ARA's events provide an invaluable opportunity for young rail professionals to build their network within the industry. We offer a range of scholarships to provide free access to our conferences and events for emerging leaders in the industry. Scholarship opportunities will be advertised through our Weekly Update newsletter throughout the year.



Scholarship winners attended AusRAIL 2022 in Brisbane.

# Networking and Events

**The ARA provides a wide range of events throughout the year to support your networking and business development.**

## **State rail industry networking dinners**

Our state industry networking dinners bring the rail industry together and provide the perfect opportunity to connect with fellow colleagues in the industry and establish positive relationships. The dinners are attended by senior executives from all sectors of the industry. Dinners are held in most capital cities each year and average an attendance of between 250 to 300 people.

Rail industry dinners planned for 2023-24 include:

- Victorian Rail Industry Networking Dinner
- Queensland Rail Industry Networking Dinner
- South Australia Rail Industry Networking Dinner
- New South Wales Rail Industry Networking Dinner
- Western Australian Rail Industry Networking Dinner

## **Women in Rail events**

The ARA launched its Women in Rail lunches in 2017 to support and promote the advancement of women in the rail industry. Lunches are held in capital cities each year, featuring guest speakers from within and beyond the rail industry.

These events provide a good opportunity for both women and men to show their support for a gender diverse rail industry and discuss opportunities to promote greater diversity over time.

## **Australasian Rail Industry Awards**

The rail industry's annual awards celebrate innovation and excellence in the rail industry. Winners will be revealed at the Awards Gala Dinner in Melbourne in September 2023. The awards are supported by the Institution of Railway Signal Engineers (IRSE), Railway Technical Society of Australia (RTSA), Rail Track Association of Australia (RTAA), Rail Industry Safety and Standards Board (RISSB) and Permanent Way Institution (PWI). Calls for nominations and the confirmation of the winners are shared on the ARA's website.

## **Boardroom events**

The ARA hosts a series of boardroom events for targeted discussions with senior government and rail industry leaders. Each event is invite-only and capped at 20 members to provide the opportunity for meaningful discussion on the opportunities and challenges facing your business.

Chief executives and senior leaders of C Class members and above will be prioritised for invitations to these events.



# Conferences

**The ARA stages a number of conferences during the year that provide an opportunity to hear the latest on major issues impacting the industry as well as industry developments and new initiatives. ARA members receive a discount on all attendance fees to our conferences. Members who are Class E and above can also receive discounts on sponsorship and exhibition fees.**

## **AusRAIL and AusRAIL PLUS**

AusRAIL is the largest rail industry conference in the southern hemisphere, bringing together industry leaders, influencers and experts from across Australia, New Zealand and beyond. AusRAIL PLUS is held every alternate year, featuring a larger exhibition, conference and social functions.

AusRAIL PLUS 2023 will be held in Sydney at the International Convention Centre from Tuesday 14 – Thursday 16 November 2023. AusRAIL's comprehensive conference and exhibition program is supported by a range of networking and social events, including a welcome reception, networking drinks and gala dinner. ARA members can access discounted delegate tickets, while members that are Class E and above can also access discounts on the outstanding sponsorship and exhibition opportunities available.

To find out more on how to partner, exhibit or register to attend AusRAIL PLUS 2023, visit **[ausrail.com](https://ausrail.com)**

## **Rail Freight Conference**

The ARA Rail Freight Conference will be back by popular demand in 2024 to explore the key opportunities and issues faced by the rail sector in Australia and New Zealand. The conference will be held in June 2024 and is an essential networking and professional development opportunity for anyone working in the rail freight sector. Look out for more information on how to get involved in early 2024.





ALSTOM  
Downer

AUSTRALIAN RAIL MARKET OUTLOOK

Key findings from the report include:

- Significant investment in rail infrastructure
- Strong growth in freight rail
- Continued investment in passenger rail



AUSTRALIAN RAIL MARKET OUTLOOK

Key findings from the report include:

- Australian rail projects to average \$14.4 billion
- \$129 billion in rail civil construction and maintenance



# ARA members

The ARA is proud to represent more than 220 organisations, including:



Acting Consulting  
Training Australia

adaptaliftGROUP

ADBRIX



Andromeda



Anutha



ARUP

AssessTech  
Ltd



aurecon











**monitor**

**NATIONAL  
INTERMODAL  
CORPORATION**

**ntc**  
National  
Transport  
Commission

**NTRO**

**NetworkRail**  
Consulting



**NOKIA**

**NOVARIS**

**NSWPorts**

**ONE RAIL**  
Australia

**pacificnational**

**PANDROL**



**PORT of BRISBANE**  
Here for the future



**Position**  
Partners

**POWER  
EARTH**

**POWERRAIL**  
AUSTRALIA

**Progress Rail**  
A Caterpillar Company

**protech**



**Public Transport  
Authority**

**QTECTIC**  
Partners in Rail

**Queensland  
Government**

**QueenslandRail**

**RCR Mining Technologies**

**RCS**  
AUSTRALIA

**RAILFIRST**  
Asset Management

**RiSSB**  
RAIL INDUSTRY SAFETY AND STANDARDS BOARD

**Rail Operations and  
Safety Consulting**

**Rail Safety Systems**  
Safe Active Protection

**RATP dev**  
AUSTRALIA

Reliance Rail



RioTinto



rt health  
FUND



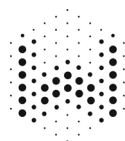
SHOAL



SIEMENS  
*Ingenuity for life*













#### Contact Details

P. (02) 6270 4501 | E. [ara@ara.net.au](mailto:ara@ara.net.au) | [ara.net.au](http://ara.net.au)

Unit 6a, 2 Brindabella Circuit, Brindabella Business Park ACT 2609

PO Box 4608, Kingston ACT 2604 Australia